

ICE CREAM DIPPING CABINET

FREEZER
MODEL : TIDC-47W



FEATURES / BENEFITS

- LOCKED-IN TEMPERATURE EQUAL FROM TOP TO BOTTOM**
New technology of the Cold Wall System eliminates temperature fluctuations throughout the top and bottom areas of the interior cabinet. No more melting ice cream above while freezing below. Scooping has never been easier.
- ATTRACTIVE CONTEMPORARY DESIGN WITH CURVED GLASS FRONT AND TOP**
Sleek new curved front and top glass is attractive and draws attention at once. Deep lowered glass front optimizes product visibility and impulse buying. This merchandiser is perfect for ice cream viewing and dipping.
- ANTI-CONDENSATION FOR DISPLAY GLASS**
Anti-condensation device installed. Also our low-emissive, energy saving glass prevents condensation from forming on the display glass
- LED LIGHTING FOR INTERIOR CANOPY**
Brighter and longer lasting LED light bulbs produce less heat, saving energy while maximizing its display effect. Independent on/off light switch equipped.
- DEEP POSITIONED INNOVATIVE CABINET DOOR HINGES**
Plastic sleeves on screw hinges eliminate metal-on-metal friction and prevents metal shavings. Hinges have been placed deeper to keep the door safe and to prevent them from coming out of the brackets.
- LARGE DOOR BUMPERS AND WIDE DOOR HANDALES FOR SAFETY & CONVENIENCE**
- TWO WAYS TO DISPLAY FLAVOR STRIP BRACKETS**
Clear plastic brackets on the glass or place AL brackets on the rail side.
- EASY GRIP RACK HANDLES**
PE coated wire container racks have easy grip handles for convenient product removal.
- EXTRA STORAGE SPACE**
Extra storage space to accommodate additional ice cream tubs underneath the basket. This model can hold eight (8) 3-gallon ice cream tubs in the display area and five (5) additional beneath the support racks. Doors located to the rear allows easy access to the storage area eliminating inconvenient bracket usage in picking up ice cream tubs.
- EFFICIENT REFRIGERATION SYSTEM**
Turbo Air's dipping cabinets are designed with oversized and balanced (CFC Free R-404A) refrigeration systems. These include efficient evaporators and condensers for faster freezing and greater efficiency.
- PE COATED REMOVABLE MAGNETIC FROST SHIELDS**
Provides fast and easy removal of accumulated frost on inside walls.

| Model | Doors | Capacity (litres) | # of Racks | HP | AMPS | Crated Weight (kg) | W x D x H (mm) |
|----------|-------|-------------------|------------|-----|------|--------------------|---------------------|
| TIDC-47W | 1 | 286 | 8 | 1/2 | 5 | 140 | 1185 x 655 x 1276.5 |

ICE CREAM DIPPING CABINET

FREEZER

MODEL : TIDC-47W

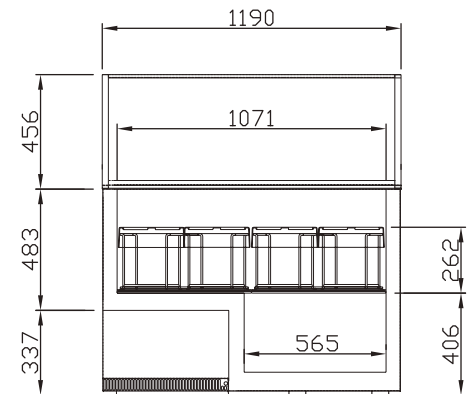
Model : TIDC-47W

PLAN VIEW

(unit : mm)

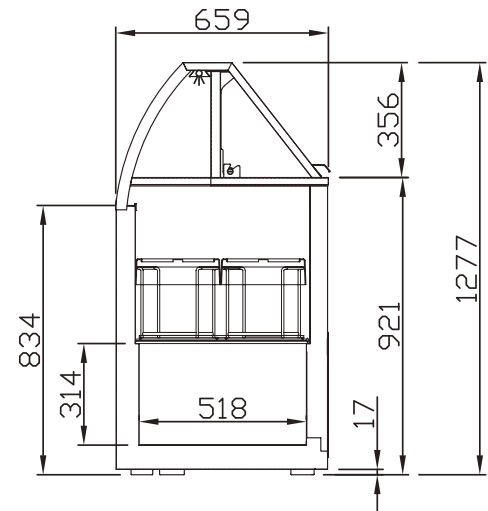
| SPEC SHEET | TIDC-47W |
|------------------------------|--|
| Classification | Freezer |
| Cabinet dimension (WxDxH mm) | 1185x655x1276.5 |
| Capacity (Liters) | 286 |
| Inner Temperature | -25°C ~ -15°C |
| Ambient Temperature | 38°C |
| Doors | 1 |
| # of Racks | 8 |
| Refrigerant | R-404a |
| Compressor (HP) | 1/2 |
| Cooling Type | Direct cooling type |
| Insulation Type | Polyurethane/ Cyclopentane+CFC Free |
| Temperature Control Type | Digital |
| Amps (A) | 5 |
| Voltage (V/Hz/Ph) | 240V 50Hz 1Ph |
| Power (W) | 500 |
| Weight (Kg) | 140 |

Design and specifications subject to change without notice.
Actual shipping weight may differ due to extra packing materials for product protection.



FRONT VIEW

- THESE MODELS ARE DESIGNED TO OPERATE IN AIR CONDITIONED ENVIRONMENTS WHERE TEMPERATURE AND HUMIDITY ARE BELOW 24°C AND 55% RELATIVE HUMIDITY
- PLACE UNITS AWAY FROM DIRECT SUNLIGHT, RAPID AIR MOVEMENT AND EXTREME TEMPERATURE CHANGES
- OPTIONAL 4" CASTERS AVAILABLE - 1/2" DIAMETER & 13 TPI (THREADS PER INCH)



SIDE VIEW

WARRANTY **2 YEARS**
PARTS & LABOUR



AUSTRALIA BRANCH

Turbo air

TURBO AIR PTY LTD
www.turboairinc.com.au
 Ground floor, Building E
 10 Highgate St, Auburn
 NSW 2144 Australia
 T. 02 9737 9881