

simply  
philosophy



International Showroom

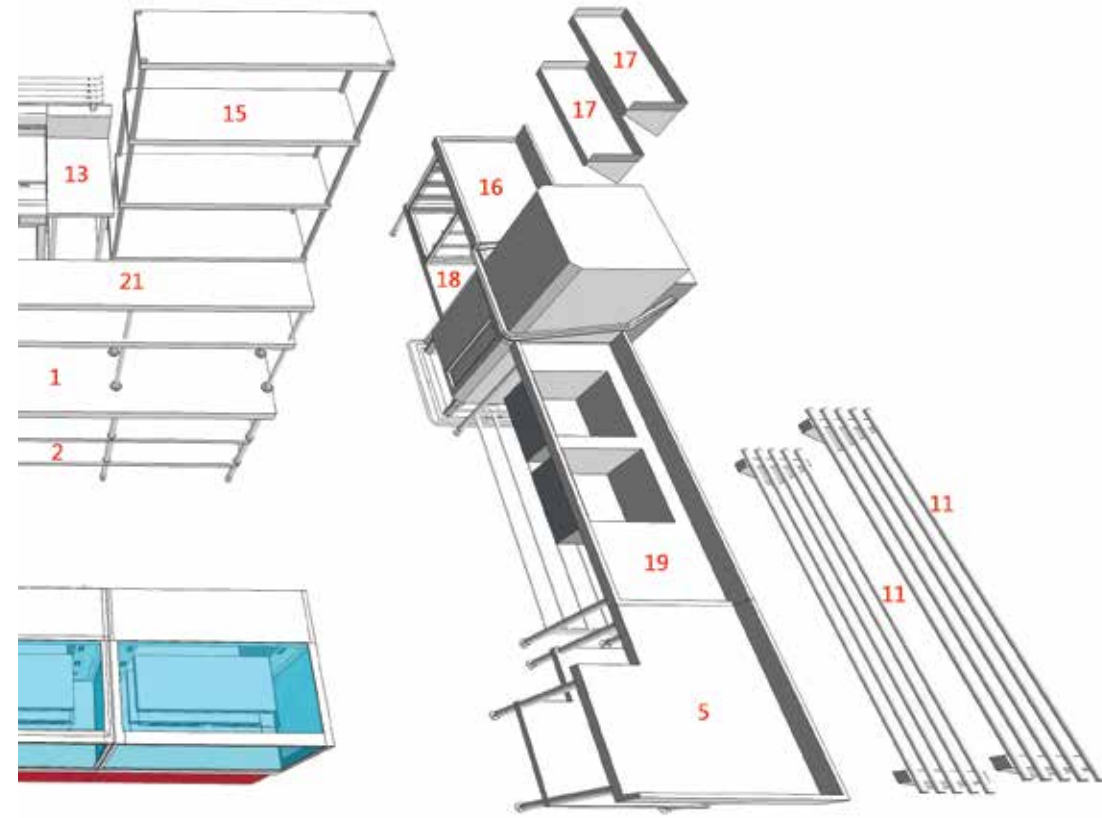
Quality

Availability

Value



simply  
the best  
system



see inside for product index

simply  
the best  
service

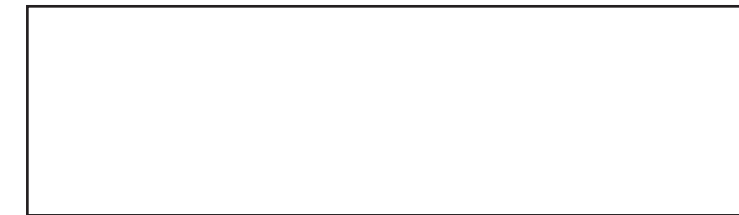


Simply Stainless strives for quality, availability and value. To assist with your design, all drawings can be downloaded from our product catalogue at [www.simplystainless.com](http://www.simplystainless.com)

For further information, please email: [info@simplystainless.com](mailto:info@simplystainless.com)  
Full range is wholly manufactured out of an ISO9001 accredited factory that manufactures exclusively for Simply Stainless.



Available from



[www.simplystainless.com](http://www.simplystainless.com)  
e-mail: [info@simplystainless.com](mailto:info@simplystainless.com)



simply stainless reserves the right to change specification, price and design without notice.

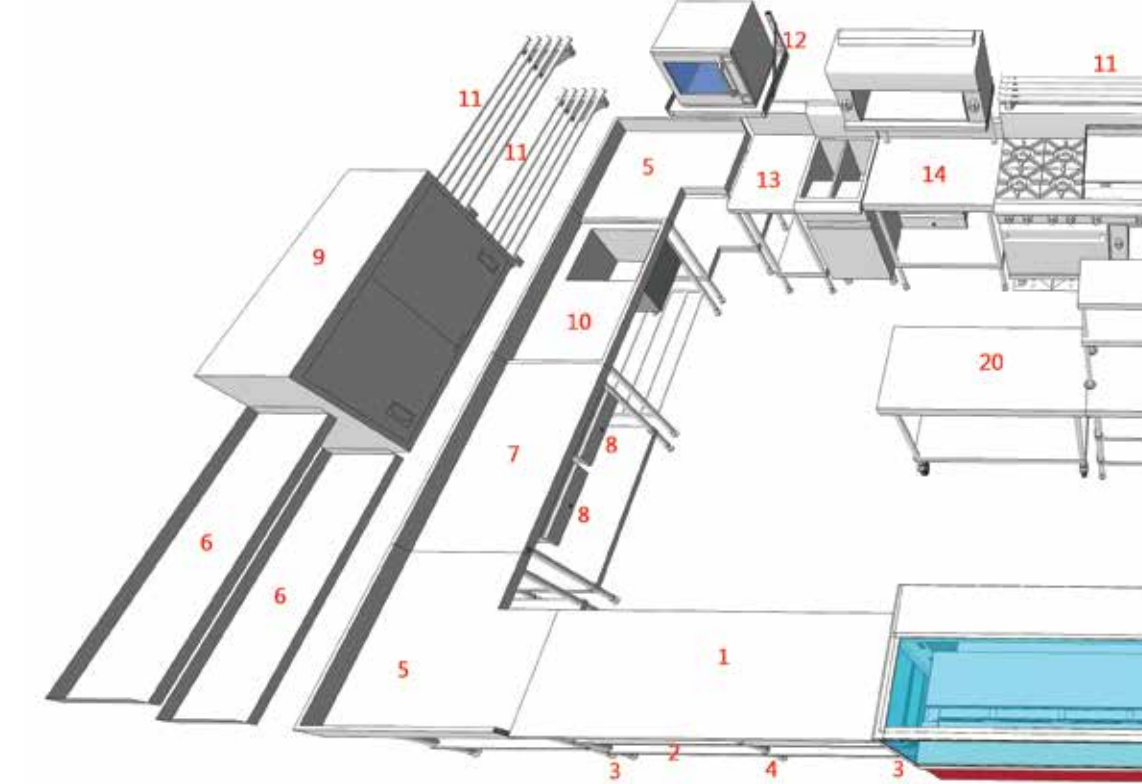


simply  
the best  
system



[www.simplystainless.com](http://www.simplystainless.com)

simply  
available



See your local dealer  
for immediate delivery



simply  
the highest  
quality



How do you recognise quality in a modular benching system?

- The "stability test" and the "knock test"
- Close tolerance CNC engineering and machinery
- Highest quality TIG welding and professional finish
- Fully-welded sinks with uniformity of gauge thickness throughout and stainless steel reinforcing channel to worktop

Our confidence in Simply Stainless quality is backed by our Lifetime Warranty. See website for details.



simply built to last



**1. Workbench**



01-6-0600 01-7-0600 01-9-1200  
01-6-0900 01-7-0900 01-9-1500  
01-6-1200 01-7-1200 01-9-1800  
01-6-1500 01-7-1500 01-9-2100  
01-6-1800 01-7-1800 01-9-2400  
01-6-2100 01-7-2100  
01-6-2400 01-7-2400

**2. Workbench with Splashback**



02-6-0300 02-6-1800 02-7-0900  
02-6-0450 02-6-2100 02-7-1200  
02-6-0600 02-6-2400 02-7-1500  
02-6-0900 02-7-0300 02-7-1800  
02-6-1200 02-7-0450 02-7-2100  
02-6-1500 02-7-0600 02-7-2400  
Also available as low height mixer stand  
02-7-0600MS

**3. Workbench Mobile**



03-6-0600 03-6-2100 03-7-1500  
03-6-0900 03-6-2400 03-7-1800  
03-6-1200 03-7-0600 03-7-2100  
03-6-1500 03-7-0900 03-7-2400  
03-6-1800 03-7-1200

**4. Corner Bench with Splashback**



04-6-0900 04-7-0900

**5. Sink Bench with Splashback**



05-6-0600 05-6-1200C 05-6-1200L 05-6-1200R 05-6-1500C 05-6-1500L 05-6-1500R 05-6-1800C 05-6-1800L 05-6-1800R 05-6-1800R 05-7-1800L 05-7-0600 05-7-1500C 05-7-1800R 05-7-1200C 05-7-1500L 05-7-2100C 05-7-1200L 05-7-1500R 05-7-2100L 05-7-1200R 05-7-1800C 05-7-2100R

**6. Double Sink Bench with Splashback**



06-6-1200 06-7-1200  
06-6-1500 06-7-1500  
06-6-1800 06-7-1800  
06-6-2100 06-7-2100  
06-6-2400 06-7-2400

**7. Dishwash Outlet Bench**



07-6-1200L 07-6-1650L 07-7-1800L 07-6-1200R 07-6-1650R 07-7-1800R 07-6-1500L 07-6-1800L 07-7-2100L 07-6-1500R 07-6-1800R 07-7-2100R

**8. Dishwash Inlet with Sink**



08-6-1200L 08-6-1650L 08-7-1800L 08-6-1200R 08-6-1650R 08-7-1800R 08-6-1500L 08-6-1800L 08-7-2100L 08-6-1500R 08-6-1800R 08-7-2100R

**9. Double Bowl Dishwash Entry**



09-6-1650-DB-R 09-7-1650-DB-R  
09-6-1650-DB-L 09-7-1650-DB-L

**10. Solid Wall Shelf**



10-0600 10-0900 10-1200 10-1500 10-1800 10-2100 10-2400

**11. Pipe Wall Shelf**



11-0600 11-0900 11-1200 11-1500 11-1800 11-2100 11-2400

**12. Single-Tier Shelf**



12-0600 12-0900 12-1200 12-1500 12-1800 12-2100

**13. Two-Tier Shelf**



13-0600 13-0900 13-1200 13-1500 13-1800 13-2100

**14. Two-Tier Trolley**



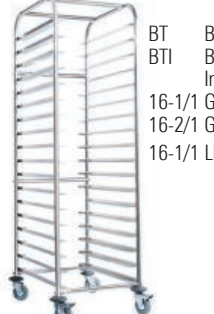
14-2

**15. Three-Tier Trolley**



15-3

**16. Mobile Gastronorm & Bakery Rack Trolley**



BT Bakery Trolley  
BTI Bakery Trolley Imperial  
16-1/1 Gastronorm  
16-2/1 Gastronorm  
16-1/1 LH (Low Height)

**17. Four-Tier Storage Shelving**



17-0900 17-1200 17-1500

**17. Defrost Rack**



17-DF-0900 17-DF-1200

**18. Salamander Bench**



18-6-0900 18-7-0900 18-BS 18-WD

**19. Drawers**



19-1 Single  
19-2 Double  
19-3 Triple

**19-GN (Gastronorm Pan)**

**22. Leg Brace**



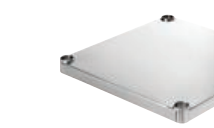
22-LB-6-0600 22-LB-7-0600  
22-LB-6-0900 22-LB-7-0900  
22-LB-6-1200 22-LB-7-1200  
22-LB-6-1500 22-LB-7-1500  
22-LB-6-1800 22-LB-7-1800  
22-LB-6-2100 22-LB-7-2100  
22-LB-6-2400 22-LB-7-2400

**20. Sink Cover**



20-SBC

**21. Undershelf**



21-US-6-0600 21-US-7-0600  
21-US-6-0900 21-US-7-0900  
21-US-6-1200 21-US-7-1200  
21-US-6-1500 21-US-7-1500  
21-US-6-1800 21-US-7-1800  
21-US-6-2100 21-US-7-2100  
21-US-6-2400 21-US-7-2400  
21-US-6-4-0900 21-US-7-4-0900

**23. Granite Workbench**



23-0600b 23-0600w  
23-0900b 23-0900w  
23-1200b 23-1200w

**24. Triple Bowl Sink with Upstand**



24-6-2400TB 24-7-2400TB

**25. Single Storage Shelf (to suit item 17)**



25-SS Shelf-0900  
25-SS Shelf-1200  
25-SS Shelf-1500

**28. Microwave Shelves**



28-MW-0450 28-MW-0580

**31. Blue Seal/Waldorf Infill Bench**



31-BS-0300 31-BS-0450 31-BS-0600 31-BS-0900 31-WD-0300 31-WD-0450 31-WD-0600 31-WD-0900

**26. Ingredient Bins**



26-bin

**29. Wall Cupboards**



29-WC-0900 29-WC-1200

**32. Door Panel Kit**



32-DPK-0600 32-DPK-0900 32-DPK-1200 32-DPK-1500 32-DPK-1800 32-DPK-2100 32-DPK-2400  
Also available with optional mid-shelf

**35. Gastronorm Dish Cassette**



35-GDC

**36. Dishwash Basket Cassette**



36-DBC

**37. Dishwash Entry/Exit**



37-6-0600

**38. Folding Table**



38-ET

**39. Sink Waste and Basket**



39-90mm



**27. Combi Oven Stand**



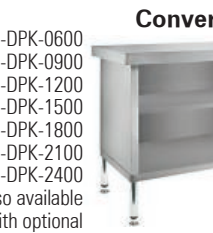
27-conv 6/10+10/10  
27-conv 6/20+10/20  
27-E32-Turbo  
27-Elux  
27-Rat

**32. Counter Conversion Kit**



32-CCK-0600 32-CCK-0900 32-CCK-1200 32-CCK-1500 32-CCK-1800 32-CCK-2100 32-CCK-2400  
Also available with optional mid-shelf

**36. Glaswash Rack**



36-GR

**36. Dishwash Basket Stand**



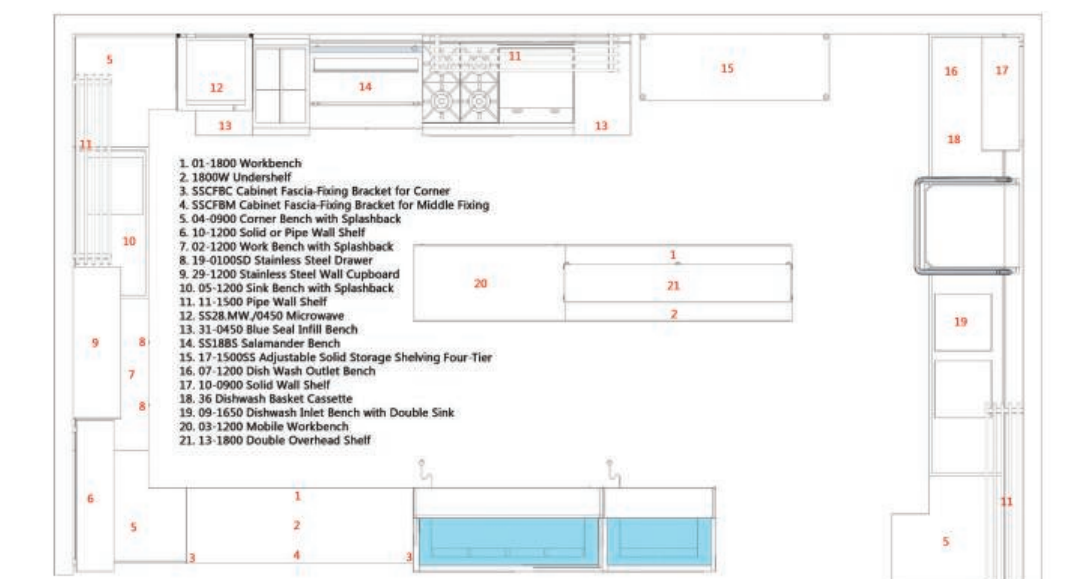
36-DBS

**40. Waiter's Station**



40-WS

simply  
the best value



**The Conventional System**  
Custom Stainless Steel Benching – Supplied & Installed  
**\*USD \$22,500**

**The Simply System**  
Modular Stainless Steel Benching – Supplied & Installed  
**\*USD \$10,093 Save \*USD \$12,407!!!**

\*pricing based on the above specification as at 2016. Price derived from an average of two Australian independent manufacturers

**Specifications 600 & 700 series**

- Tops** 
  - 1.2mm stainless steel no.4 finish
- Cores** 
  - 3mm Zinalume
  - 1.2 mm Stainless steel top hat stiffening channel
- Frames/legs** 
  - 38mm Dia round stainless steel tube satin polished 1.2mm thick.
  - Bench height 900mmH
  - Adjustable by 30/40mm
  - Stainless steel disc feet
- Undershelves** 
  - 1.2mm stainless steel no.4 finish with 'top hat' reinforcement
- Bowls** 
  - 1.2mm fully-welded and polished
  - 450 x 450 x 300mm deep bowls in all benches to accept 90mm sink waste
  - 600 x 450 x 300mm deep bowls in 06-6-2400 and 06-7-2400 only
  - Watermark & Watercorp approved sink waste supplied with all bowls