



RECTANGULAR HEATED WELL

POWER UP-3KW

HEATMAX

Hatco Heat-Max Rectangular Heated Wells are specially designed to hold a wide variety of foods, including soups, curry, gravies and a variety of toppings, providing flexibility. A variety of optional adapter kit provides different operation needs.

The temperature is monitored by an electronic controller for optimum results. All units are equipped with a control panel featuring three temperature set points from 50°C to 100°C and an energy saving low power mode that saves electricity during off-peak hours. Heat is evenly distributed throughout the unit to hold foods at desired temperatures and the insulated stainless steel design provides easy maintenance and durable performance.



FEATURES INCLUDE:

- Three temperature set points from 50°C to 100°C.
- Energy saving low power mode.
- Insulated stainless steel design.
- "Anti-Drip" design of well edge prevents water, sauce and condensation from flowing to the outside of unit.
- Four optional adapter kit for soup kettle, sauce warmer, steam warming and reheating pre-cooked pasta.
- Drain for easy cleaning and maintenance.
- Available in freestanding or built-in models.



Model RCTHW-1 with optional Soup Kettle Adaptor

A full range of accessories are available including S/S baskets and steamers for specific requirements



FSM (FOOD SERVICE MACHINERY PTY. LTD.)

HEAD OFFICE:

21-23 Agosta Drive, Laverton North,
Vic. 3026 Australia
T: +61 3 9368 2300 F: +61 3 9369 3800
E: sales@fsm-pl.com.au W: www.fsm-pl.com.au

SYDNEY OFFICE:

Unit 15, 7-9 Progress Circuit,
Prestons, NSW 2170
T: +61 2 9608 8620 F: +61 2 9607 9370
E: sales@fsm-pl.com.au W: www.fsm-pl.com.au

QUEENSLAND OFFICE:

4/40 Rivergate Place,
Murarie, QLD 4172
T: +61 7 3390 4185 F: +61 7 3393 9508
E: sales@fsm-pl.com.au W: www.fsm-pl.com.au

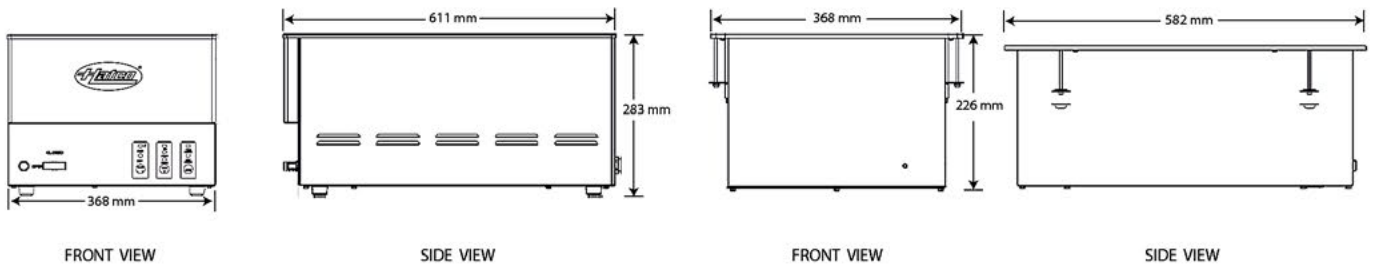
PERTH:

T: 0413 893 311
E: sales@fsm-pl.com.au
W: www.fsm-pl.com.au



HEAT-MAX HEATED WELLS

Models RCTHW-1E, RCTHW-1B



Model RCTHW-1E

Model RCTHW-1B

SPECIFICATIONS

Model	Type of well	KW	Shipping Weight
RCTHW-1E	Rectangular Single Well	3kw	10kg
RCTHW-1B	Rectangular Single Built-in	3kw	11kg

NOTE: RCTHW-1B AVAILABLE TO ORDER ONLY

15A GPO required

DIMENSIONS

RCTHW-1E: 368W x 611D x 283H mm

RCTHW-1B: 368W x 582D x 226H mm

WELL DIMENSIONS:

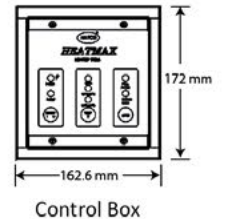
305W x 510L x 160D mm

CUT-OUT DIMENSIONS

RCTHW-1B: Unit 335W x 550D mm

Control Box 141W x 148H mm
(prior to Serial Number C401451636)

Control Box 144W x 132H mm
(after Serial Number C401451636)



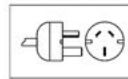
VOLTAGE

240 volts, 50/60Hz, Single Phase

CORD LOCATION

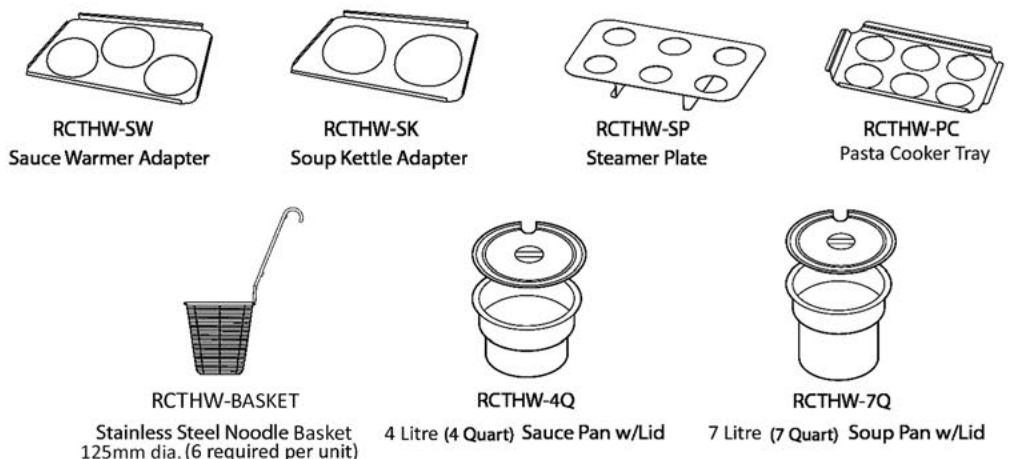
Back side of unit. Supplied with 15A plug

PLUG CONFIGURATIONS



ACCESSORIES

- Sauce Warmer Adapter
- Soup Kettle Adapter
- Steamer Plate
- Pasta Cooker Tray
- Stainless Steel Noodle Basket
- 4 Liter (4 Quart) Sauce Pan w/Lid
- 7 Liter (7 Quart) Soup Pan w/Lid



FSM (FOOD SERVICE MACHINERY PTY. LTD.)

HEAD OFFICE:

21-23 Agosta Drive, Laverton North,
Vic. 3026 Australia
T: +61 3 9368 2300 F: +61 3 9369 3800
E: sales@fsm-pl.com.au W: www.fsm-pl.com.au

SYDNEY OFFICE:

Unit 15, 7-9 Progress Circuit,
Prestons, NSW 2170
T: +61 2 9608 8620 F: +61 2 9607 9370
E: sales@fsm-pl.com.au W: www.fsm-pl.com.au

QUEENSLAND OFFICE:

4/40 Rivergate Place,
Murarrie, QLD 4172
T: +61 7 3390 4185 F: +61 7 3393 9508
E: sales@fsm-pl.com.au W: www.fsm-pl.com.au

PERTH:

T: 0413 893 311
E: sales@fsm-pl.com.au
W: www.fsm-pl.com.au