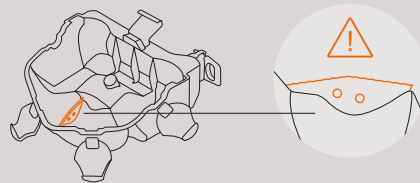


CAUTIONS

Take great care with the cutting parts to avoid accidents.

Warning!

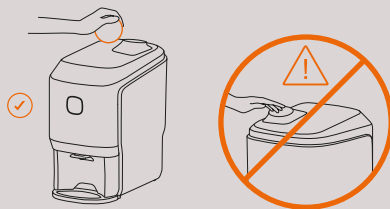
Take care with the blade when removing the shafts and drums unit



Never operate the machine from the side or from the back. Always load the feeder from the front of the machine.

Warning!

Do not attempt to access the juicing zone from the feeder with your hand, to avoid accidents.



Warnings. Do not manipulate the machine in such a way that it works without safety elements.

This appliances are intended to be used for commercial applications, for example in kitchens of restaurants, canteens, hospitals and in commercial enterprises such as bakeries, etc., but not for continuous mass production of food.

The appliance is not intended to be cleaned with a water jet or a steam cleaner.

This appliance can be used by children over the age of 8 or older, or by people with impaired physical, sensorial or mental capacities or who lack experience or knowledge, if they are supervised or have received adequate training with respect to the safe operation of the appliance and they

understand the risks entailed.

Children should be supervised to make sure they do not play with the appliance.

The cleaning and maintenance to be performed by the user must not be carried out by children without supervision.

This machine contains an equipotential terminal on the rear to connect the Earth Tap of other appliances to the Earth Tap of your installation through this terminal. If you use it, slacken the nuts and washers, couple the Earth Tap cable of the auxiliary appliance and firmly tighten the nuts and washers again. This equipotentiality point is indicated with the following symbol:

Do not use other different fruit to that specified in the manual.

When you clean, perform maintenance or replace parts, make sure that you have always unplugged the power cable from the socket and it is visible.

Use the cutting elements with great care, to avoid possible cuts.

The parts that are in contact with food must be cleaned according to the instructions that you can read in the cleaning chapter.

If the power cable is damaged, it must be replaced with a cable or special unit to be supplied by the manufacturer or by the after-sales service.

If you need more information, you can access the full user manual here



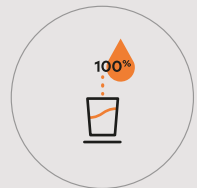
Small. Smart. Stylish

SOUL

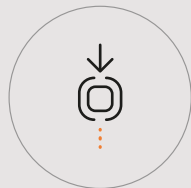
SERIES 2

Quick Start Guide

Maximum innovation in the minimum space



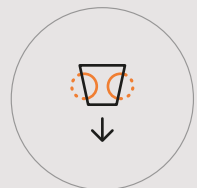
PURE JUICE



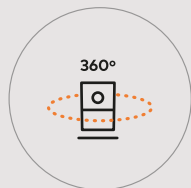
PUSH&JUICE



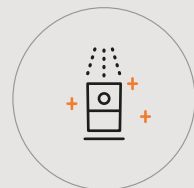
ALL CITRUS



CONICAL
SYSTEM



360 DESIGN



EASY TO CLEAN

01.

Switch your Soul on

Plug the machine into the electricity grid.
Make sure that the network voltage coincides with the voltage shown on the machine Identification Label.



Connect your juicer
as you can see explained on **Zumex Connect**



Press the front button for 1 sec until a steady white light appears.
Check that the top lid, waste collection tray and door are in place correctly. Remember to open the tap and use a glass at the juice outlet.

02.

Juice

To juice, simply press the front button. You will see the colour of the button change automatically from white to orange.

Understand the language of Soul



WHITE. Ready to juice.



FLASHING WHITE. Waste collection tray incorrectly positioned / Front door open / Top lid incorrectly positioned



ORANGE. Juicing correctly.



FLASHING ORANGE. Empty waste collection tray / Juicing system blocked
PulpOut System blocked



The machine will notify with three bleeps when the waste collection tray is full and needs to be emptied.

03.

Switch your Soul off

Press the front button for 2 secs,
or disconnect the network cable directly.

If the machine does not detect any oranges, it will stop, approximately 20 secs after the last orange has gone through.

JUICE
EXPERIENCE