



ES25

Pass-Through Recirculating Warewasher



The Eswood ES25 warewasher is Australian designed and built to last in harsh conditions. Its compact form excels in commercial kitchens, offering continuous performance. Independent upper and lower spray arms ensure thorough cleaning, while digital temperature displays ease monitoring. Standard detergent and rinse aid pumps streamline the process. Meeting high health and sanitary standards with FSANZ, HACCP, and WaterMark certifications, the ES25 is a reliable and efficient solution for safe food handling and maintaining a hygienic workspace.

ES25 standard features and benefits

- Counter-balanced lift-up hood with ergonomically designed wrap around handle
- Durable stainless-steel body construction and wash arms
- Automatic fill to wash and rinse tanks
- High capacity 540-700 pieces
- Digital wash and rinse temperature controllers and displays
- Detergent and rinse aid pump as standard
- Suitable for corner or inline installation
- Machine starts upon closure of hood
- Easily removable spray arms and filters
- Wash and Rinse pump fitted as standard
- Operation interlocked to rinse temperature

Standard accessories

- 1 x plate rack
- 1 x cup rack
- 1 x cutlery container



90 sec



120 sec



Please note, due to ongoing product development and improvement, we reserve the right to change product design and specification at any time without notice.



1800 013 123 | +61 2 9604 7333
sales@middleby.com.au
middleby.com.au

VIC - TAS - 47 Stubbs Street, Kensington VIC 3031
QLD - U12, 210 Queensport Rd Nth, Murarrie QLD 4172
WA - U2, 9 Meares Way, Canning Vale WA 6155

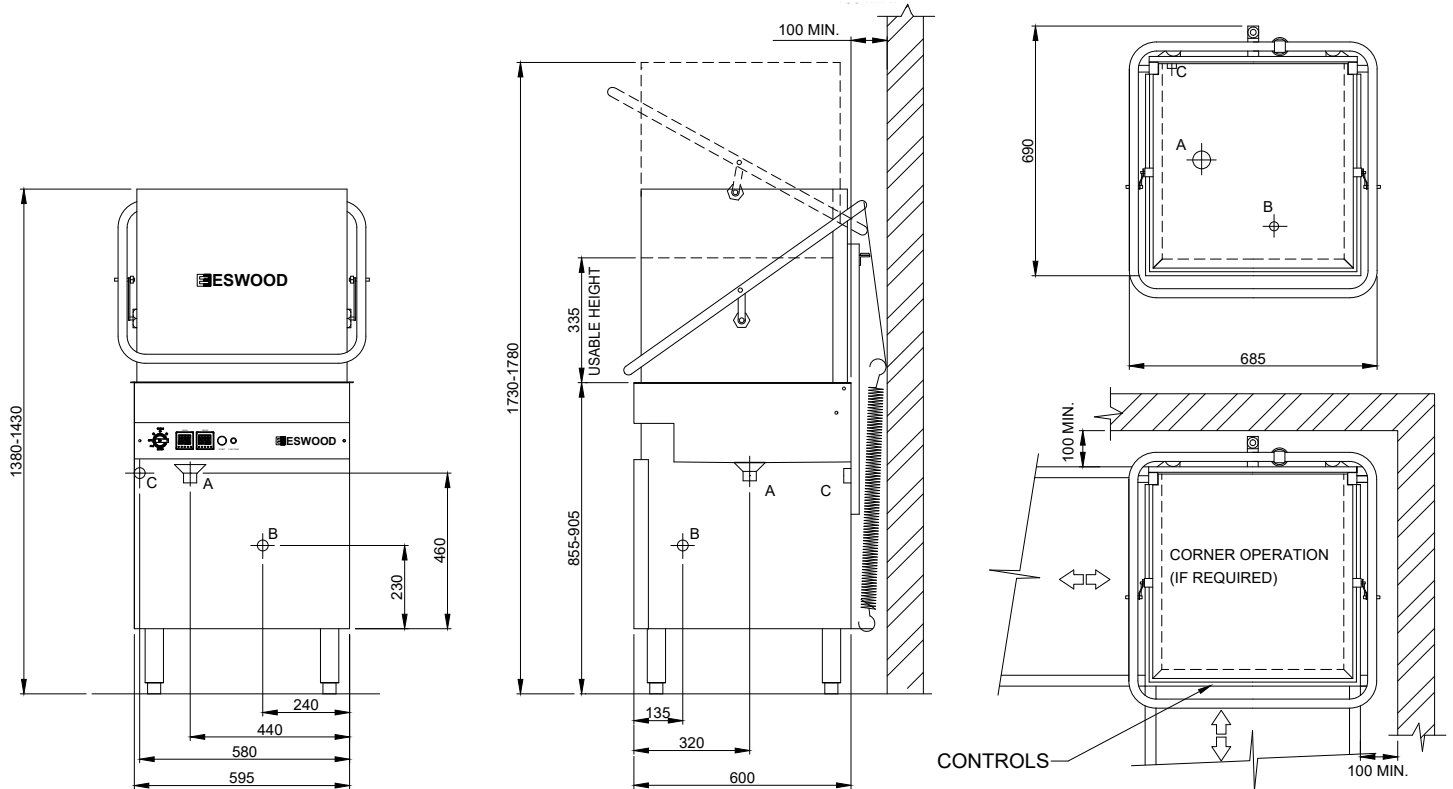
HEAD OFFICE
AND MANUFACTURING PLANT
211-217 Woodpark Road, Smithfield NSW 2164

v2_2024



ES25 Pass-Through Recirculating Warewasher

- A. Drain connection 1 1/2" BSP
 B. Hot water supply inlet 1/2" BSPF (15-58 psi / 100-400 kPa) 65°C
 C. Electrical connection 240V / 50HZ / 15A plug x 2m lead



ES25 SPECIFICATIONS

DIMENSIONS (WxDxH)	595 x 600 x 1405 mm	WASH CYCLE	90 and 120 sec
HEIGHT WITH DOOR OPEN	1755 mm	WASH AND RINSE PUMP	Fitted
RACK SIZE (WxD)	500 x 500 mm	DETERGENT AND RINSE AID PUMP	Fitted
ELECTRICAL CONNECTION	15A Single Phase, 240V	DRAIN PUMP	Optional
RATING	3.5 kW / 15 Amps	WATER CONSUMPTION	3.5L/cycle
WATER CONNECTION	65°C / 1-4 bar (15-58 psi)	TANK CAPACITY	30L
DRAIN CONNECTION	1 1/2" BSP	WEIGHT	103 kg
MEAL SERVICE	30 - 40 pax (25 racks/hr)	PACKED	0.5 m ³



PE-388-GE-09

Please note, due to ongoing product development and improvement, we reserve the right to change product design and specification at any time without notice.



1800 013 123 | +61 2 9604 7333
 sales@middleby.com.au
 middleby.com.au

VIC - TAS - 47 Stubbs Street, Kensington VIC 3031
QLD - U12, 210 Queensport Rd Nth, Murarrie QLD 4172
WA - U2, 9 Meares Way, Canning Vale WA 6155

HEAD OFFICE AND MANUFACTURING PLANT
 211-217 Woodpark Road, Smithfield NSW 2164

v2_2024