

# zumex

## USER'S MANUAL

ENGLISH  
EN

### INDEX

1. GENERAL INFORMATION.....	24
2. TECHNICAL CHARACTERISTICS.....	25
3. WARRANTY.....	26
4. INSTRUCTIONS FOR USE.....	27
4.1 PREPARATION.....	27
4.2 OPERATION.....	30
4.3 CLEANING.....	31
5. DIAGRAMS WITH PARTS AND LIST OF SPARE PARTS.....	33
6. DETECTING FAULTS AND PROBLEMS AND SECURITY ADVICES.....	39
7. DECLARATION OF CONFORMITY.....	40
ANNEX:	
ELECTRICAL DIAGRAM.....	102

Zumex reserves the right to modify the information included in this manual with no prior warning.

## 1. GENERAL INFORMATION

This manual describes the general information for the following models of Zumex:

### COUNTERTOP MODELS:

Zumex Speed Self-Service

### MODELS WITH BASE STAND:

Zumex Speed Self-Service Podium

Zumex Speed Cooler Podium

- The specific data of your Zumex juicer (voltage, frequency and other important data) are located on the ID label, found on the first part of the manual and on the unit.
- Contact your Distributor / Official Technical Support Service for any technical questions you might have, providing the Serial Number shown on the ID Label of the unit.
- Disconnect the unit before carrying out any cleaning or maintenance procedures.
- Zumex adopts all measures required to collect units that are not in operation, guaranteeing the correct environmental management practices. Please, contact an authorized distributor of Zumex to discard these units.
- Zumex Marketing Department will address all comments and suggestions you might have about our units or service network. Please contact them directly at this address:

ZUMEX MÁQUINAS Y ELEMENTOS, SA  
 P.gno. Inds. Moncada Il. C/ La Cloa, 16  
 46113 Moncada, Valencia, Spain  
 Tel.: + 34 961 301 251  
 Fax: + 34 961 301 255  
 E-mail: marketing@zumex.com

## 2. TECHNICAL CHARACTERISTICS

MODEL		Oranges per minute	Dimensions (cm/inches)	Net weight (kg/lb)	Power	Protection	Acoustic pressure level	Safety	Maximum fruit size
ZUMEX SPEED SELF-SERVICE	38	64x70x104 25"20"x27"56"x40"94"	62/136	280 W for 220-240 V 50/60 Hz	IPX4	Lower than 70 dB(A)	Double magnetic safety detector	81 mm (recommended between 65 and 78 mm)	
ZUMEX SPEED SELF-SERVICE PODIUM	38	68x72x176 26"77"x28"35"x39"29"	104/229	280 W for 220-240 V 50/60 Hz	IPX4	Lower than 70 dB(A)	Double magnetic safety detector	81 mm (recommended between 65 and 78 mm)	
ZUMEX SPEED COOLER PODIUM	38	68x74x185 26"77"x29"13"x72"83"	115/252	560 W for 220-240 V 50/60 Hz 560 W for 115 V 60 Hz	IPX4	Lower than 70 dB(A)	Double magnetic safety detector	81 mm (recommended between 65 and 78 mm)	

EN

### 3. WARRANTY

• **SCOPE OF THE WARRANTY:** The unit has a two-year warranty against defects and construction problems that could harm the correct operation, provided that the inner parts or mechanisms have not been manipulated. The following are excluded from the warranty.

• **EXCLUSIONS:** Labor, trips, transport, parts that have become deteriorated due to natural wear as a consequence of use, as well as any damage resulting from the incorrect usage or installation of the unit and faults caused as a result of force majeure.

• Any incorrect handling of the ID Label will make the Warranty void. Likewise, the warranty will also be void if other persons handle the unit, since only the Official Technical Support Service is qualified and authorized to do so.

• **Always provide the SERIAL N° on the ID Label when contacting the Technical Support Service.**

### 4. INSTRUCTIONS FOR USE

#### 4.1 PREPARATION

To operate the juicer, follow these steps:

- 1 - Remove the packaging and place the unit on a flat surface.
- 2 - Use the correct voltage, as described on the ID label of the unit and on the first page of the manual.
- 3 - Zumex Speed Self-Service
  - On the feeding basket of the machine you will find the following: base supplement and stainless steel front tap. Inside the base of the machine you will find the peel containers and glass tray with its filter.
- To install the machine, place it on the base supplement, which is required to raise the machine and for the correct operation of the tap.
- Screw the tap, as shown in Fig. 2 (drop-down diagram) to the machine's juice container which includes a threaded front outlet to attach the tap.
- Place the peel containers on both sides of the machine under the peels and the glass tray with its filter under the juice outlet.
- 4 - Zumex Speed Self-Service Podium
  - When you purchase a Zumex Speed Self-Service Podium machine, you will receive two packages: Open both packages, which will include the juicer and the base stand.
  - The feeder basket of the machine includes the stainless steel front tap, remove the package and keep it for assembly at a later stage.
  - After removing the packaging of the base stand, remove the screws of the fixing bracket (drop-down diagram) and keep it for assembly at a later stage. Inside the base of the machine you will find the peel containers and drip tray of the base stand with its filter.
  - To install these elements, block the front wheels of the base stand with the brake pedal to avoid it from moving during the installation, details in Fig. 1 (drop-down diagram).

- Place the machine on the base stand, Fig. 2 (drop-down diagram), matching the inside corners of the base of the machine with the two rubber plugs of the base stand, to match the holes of the fixing brackets with those of the machine. Fix the machine with the screws. Fix the drip tray with its filter to the base stand.

- Place the peel outlets, Fig. 2.

- Screw the tap, as shown in Fig. 2 (drop-down diagram) to the machine's juice container which includes a threaded front outlet to attach the tap.

#### 5 - Zumex Speed Cooler Podium

- When you purchase a Zumex Speed Cooler Podium machine, you will receive two packages: Open both packages, which will include the juicer and the base stand.

- After removing the packaging of the base stand, remove the screws of the fixing bracket, Fig. 1 and keep it for assembly at a later stage. Prepare the following components that will be inside the waste container, inside the base stand (see section 5 of the manual to identify the elements):

Peel container: Remove the packaging and reserve for assembly.  
Deposit, drip tray with filter, pump cover, tap piston, tap joint, control lever and fixing plate: reserve these elements for the assembly of the dispenser group.

Place the empty waste container inside the base stand.

- To install these elements, block the front wheels of the base stand with the brake pedal to avoid it from moving during the installation, details in Fig. 1.

- Place the machine on the base stand, Fig. 3 (drop-down diagram), matching the inside corners of the base of the machine with the two rubber plugs of the base stand, placing the cables inside (power supply cable and photocell bus) through the central opening. Fix the machine with the screws.

- After fixing the machine on the base stand, open the back cover of the base stand by turning the knob counter-clockwise, Fig. 4. When the cover is removed, you will see the connectors inside. Proceed to connect the juicer. Also connect the photocell cable to its socket inside the machine. Close the back cover of the base stand.

- Assemble the dispenser of the cooling group in this order:

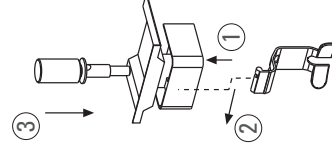
- Assemble the piston-joint and the lever to the deposit, following the instructions described in the attached diagram.
- Place the deposit
- Adjust the cover of the pump inside the deposit with the arrow pointing towards you.
- Attach the metallic fixing plate to fix the deposit.

- Adjust the photocells, in accordance with the quantity of juice you wish to store in the deposit, Fig. 5.

- Fix the drip tray to the base stand and place the lateral peel containers.

- Connect the machine's cable to a standard socket with a ground connection.

- Make sure that the cover is placed correctly; otherwise the safety detectors of the machine will prevent it from starting.



#### REMEMBER:

Never use fruit with a diameter that exceeds 81 mm (recommended between 65 and 78 mm)

## 4.2 OPERATION

### Operation of the models:

Zumex Speed Self-Service

Zumex Speed Self-Service Podium

- Fill in the orange feeder and place a glass or jug under the juice outlet.
- The machine has a MAN/AUTO selector that provides two operation modes:  
In the MAN mode, the machine will operate when the tap is used.  
In the AUTO mode, the machine will operate with the ON/OFF push-button

### Operation of the model:

Zumex Speed Cooler Podium

- Fill in the orange feeder.
- Press the ON (green) push-button. The photocells will detect the absence of juice in the deposit and the machine will be started automatically. The juicing process will continue until the photocells detect the juice level selected.
- Start the cooling group by pressing the push-button placed on the left of the juice outlet of the deposit. You can adjust the temperature of the juice with the regulation device located at the right; turn it clockwise to increase the cooling level and counter-clockwise to reduce it.
- Press the lever of the deposit to fill a glass or jug. After one service, the level of the deposit will go down and the machine will start automatically until a new deposit is filled to the desired level. To stop the automatic juice detection process, press the OFF (red) push-button.

## 4.3 CLEANING

The following steps must be carried out for the correct cleaning of the unit:

- 1-Disconnect the machine.
- 2-Disassemble the front cover.
- 3-Disassemble the cutter head (Fig. 6) pulling towards you, from the handle. **WARNING this element is very dangerous, handle with care.**
- 4-Remove the peel extractors from the supports (Fig. 7).
- 5-Disassemble the pressing units in pairs, previously removing the security knobs (Fig. 8).
- 6-Disassemble the container and juice filter (Fig. 9 and Fig. 10).
- 7- In the models with a base stand, disassemble the peel deposit, and deposit in the case of Zumex Speed Cooler Podium.

EN

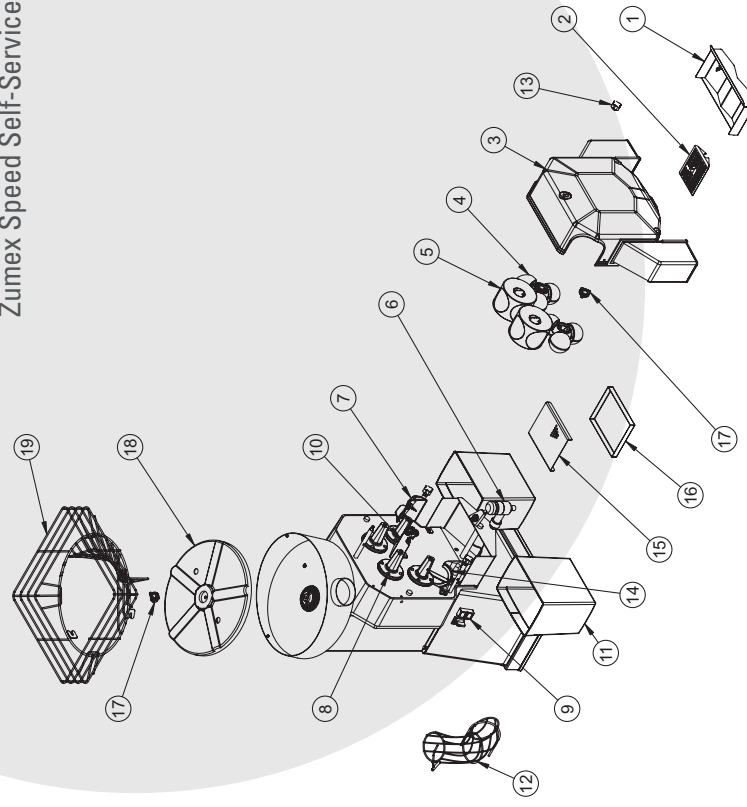
- All items, **EXCEPT FOR THE FRONT COVER AND THE ZUMEX SPEED COOLER PODIUM CONTAINER**, can be washed with a dishwasher.
- Clean the juicing area and cover with a soft cloth, dampened with water and soap suitable for tableware.
- Next, rinse with water to ensure there is no soap.
- After cleaning, assemble all elements in the inverse disassembly order. Make sure that all parts are correctly adjusted and secured. Check all parts to ensure that they are correctly assembled and fixed.
- To clean the inside of the stainless steel tap, fill in the container with clean water and press the tap to remove the remains of juice and pulp inside the tap. To guarantee a better cleaning process, disassemble the tap from the stainless steel container.
- Remember that each peel ejector (Fig. 8) can only be fitted on each side, since they can not be fitted on the incorrect side. The wedge paddle must be inserted until it reaches the end in the male juicing drum opening.

• In order to avoid the accumulation of wax, the fruit feeder must be cleaned frequently (Fig. 11).

• In the models with a base stand, always clean the hopper and inside of the base stand, so that there are no peels or pulp remains.

## 5. DIAGRAMS WITH PARTS AND LIST OF SPARE PARTS

### Zumex Speed Self-Service



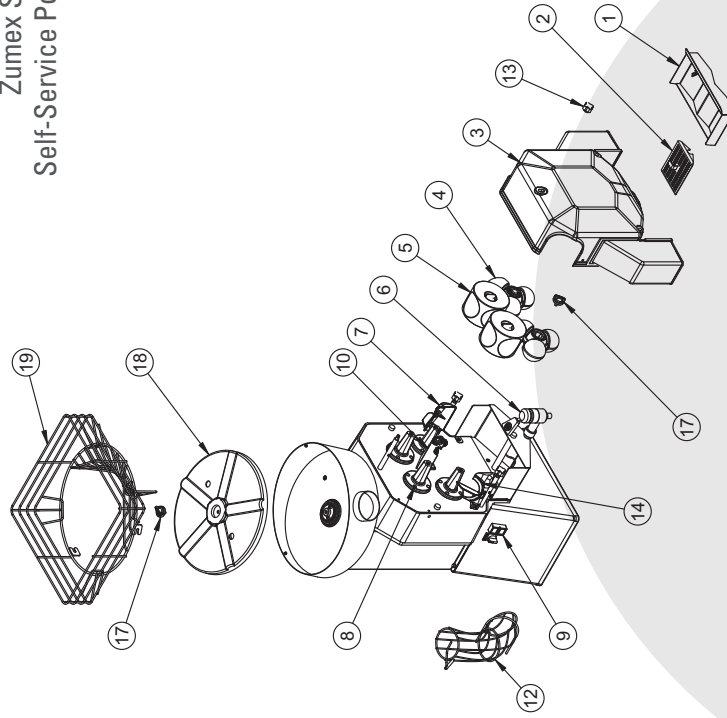
Index	Reference	Description
1	260.0208.002	PLASTIC JUICE FILTER
2	260.0209.000	JUICE CONTAINER/INTERIOR FILTER
3	33.013.001	FRONT COVER
4	33.0031.000	LOWER PRESSING UNIT
5	33.0024.000	UPPER PRESSING UNIT
6	13.125.001	STEEL FRONT TAP
7	33.0001.000	RIGHT FEEL EJECTOR
8	200.3384.000	FASTENER SUPPORT CAP
9	33.0059.000	BUTTON RUBBER PROTECTION
10	33.0013.000	BLADE HOLDER
11	13.115.002	PEEL BUCKET
12	225.0921.002	FEEDER TUBE D85
13	33.0004.000	RETAINING KNOB KIT
14	33.0002.000	LEFT JUICE EXTRACTOR
15	260.0214.001	DRAIN TRAY
16	260.0213.001	DRAIN TRAY
17	33.0005.001	SECURING KNOB
18	33.0034.000	FEEDER PLATE
19	260.0908.003	FEEDER BASKET

#### REMEMBER:

- Do not place the front cover and the container in the dishwasher. It can be cleaned with a soft cloth and soapy water. Do not use abrasive products or lime protection products.
- To clean the inside of the tap, fill the container with clean water and press the tap to eliminate the remains of juice and pulp inside the tap.

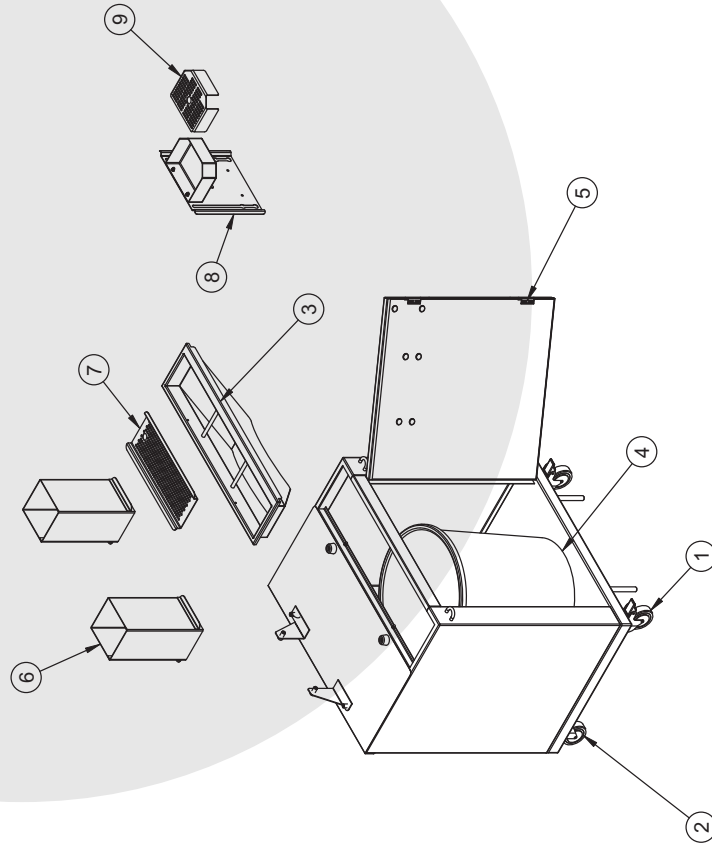


### Zumex Speed Self-Service Podium



Index	Reference	Description
1	260.0208.002	PLASTIC JUICE FILTER
2	260.0209.000	INTERIOR FILTER JUICE CONTAINER
3	33.013.001	FRONT COVER
4	33.0031.000	LOWER PRESSING UNIT
5	33.0024.000	UPPER PRESSING UNIT
6	13.125.001	STEEL FRONT TAP
7	33.0001.000	RIGHT PEEL EJECTOR
8	200.3364.000	FASTENER SUPPORT CAP
9	33.0059.000	BUTTON RUBBER PROTECTION
10	33.0013.000	BLADE HOLDER
12	225.0921.002	FEEDER TUBE D85
13	33.0004.000	RETAINING KNOW KIT
14	33.0002.000	LEFT JUICE EXTRACTOR
17	33.0003.001	SECURING KNOB
18	33.0034.000	FEEDER PLATE
19	260.0908.003	FEEDER BASKET

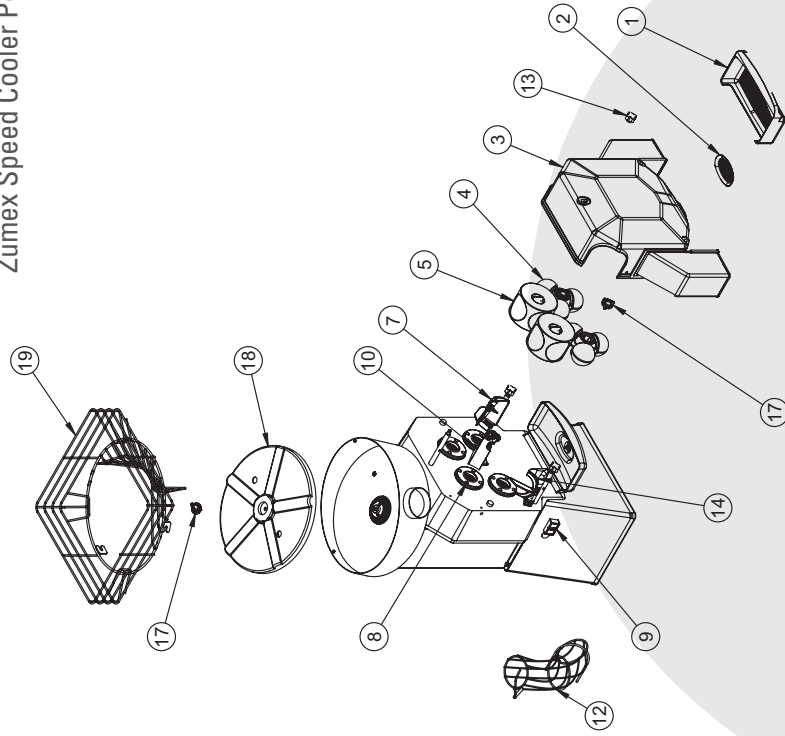
### Zumex Speed Self-Service Podium: base stand



Index	Reference	Description
1	180.0008.000	ROTARY WHEEL, WITH BRAKE
2	180.0007.000	ROTARY WHEEL, WITHOUT BRAKE
3	220.0219.001	STAND PEEL HOPPER
4	165.0001.003	43 LT. BUCKET
5	120.0014.001	DOOR LOCK MAGNET
6	220.0217.002	PEEL OUTLET
7	220.0218.001	STAND FILTER
8	33.0064.000	FRONT+ DRIP TRAY
9	260.0233.002	DRIP TRAY FILTER

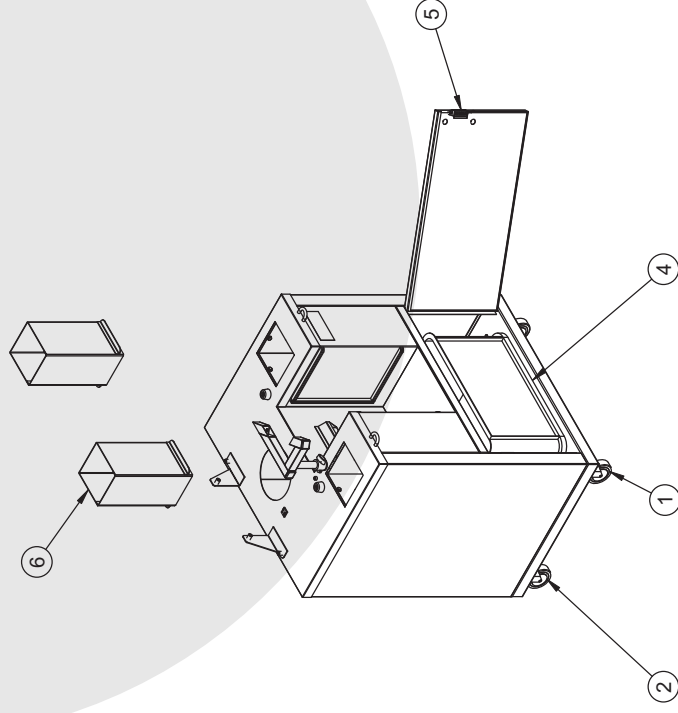


Zumex Speed Cooler Podium



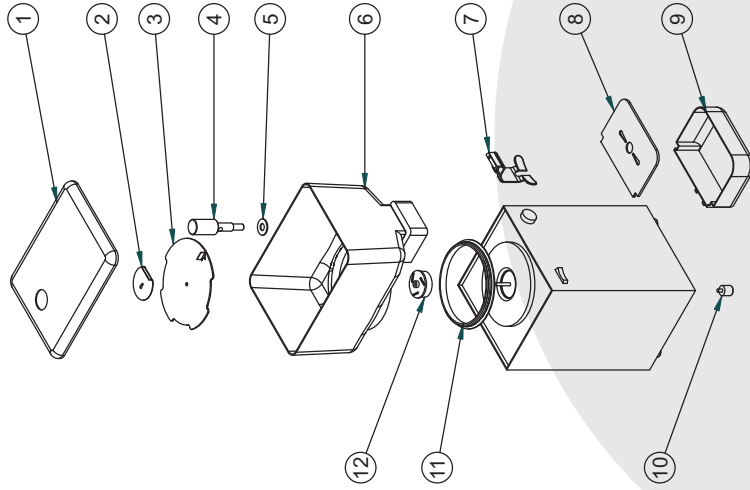
Index	Reference	Description
1	260.0202.001	PLASTIC JUICE FILTER
2	260.0203.000	INTERIOR FILTER JUICE CONTAINER
3	33.013.001	FRONT COVER
4	33.0031.000	LOWER PRESSING UNIT
5	33.0024.000	UPPER PRESSING UNIT
7	33.0001.000	RIGHT PEEL EJECTOR
8	200.3364.000	FASTENER SUPPORT CAP
9	33.0059.000	BUTTON RUBBER PROTECTION
10	33.0013.000	BLADE HOLDER
12	225.0921.002	FEEDER TUBE D85
13	33.0004.000	RETAINING KNOB KIT
14	33.0002.000	LEFT JUICE EXTRACTOR
17	33.0003.001	SECURING KNOB
18	33.0034.000	FEEDER PLATE
19	260.0908.003	FEEDER BASKET

Zumex Speed Cooler Podium:  
base stand



Index	Reference	Description
1	180.0008.000	ROTARY WHEEL, WITH BRAKE
2	180.0007.000	ROTARY WHEEL, WITHOUT BRAKE
4	165.0003.000	30 L.T. BUCKET
5	120.0014.001	DOOR LOCK MAGNET
6	220.0217.002	PEEL OUTLET

## Zumex Speed Cooler Podium Dispenser



Index	Reference	Description
1	13.020.000	DEPOSIT COVER
2	260.0004.000	FIXING PLATE
3	260.0005.000	PUMP COVER
4	260.0009.000	TAP PISTON
5	260.0010.000	TAP JOINT
6	260.0001.000	JUICE DEPOSIT
7	260.0011.000	LEVER
8	260.0007.000	DRIP TRAY FILTER
9	260.0008.000	DRIP TRAY
10	260.0024.000	BALANCE FOOT
11	260.0003.000	DEPOSIT JOINT
12	260.0006.000	PUMP TURBINE

## 6. DETECTING FAULTS AND PROBLEMS AND SECURITY ADVICES

• ALL MODELS

FAULT	POSSIBLE CAUSE	SOLUTION
The machine does not start	Machine is not on	Connect it
	No voltage	Check the socket
	Top is not placed correctly	Ensure it is placed correctly
	Faulty safety detectors	Contact the Technical support service
	Faulty ON/OFF switch	Contact the Technical support service
Machine blocks often when juicing	Faulty circuit	Contact the Technical support service
	Not enough voltage	Check voltage and see if it matches that described in the manual
	Faulty circuit	Contact the Technical support service
Drums are blocked	Oranges are blocked	Eliminate blockage
Drums are not synchronized	Internal fault	Contact the Technical support service
Peel ejector is broken	Peel ejectors are incorrectly placed	See the manual for correct placement instructions (Fig. 7)
Motor is running but drums are not running	Internal fault	Contact the Technical support service
Tap is blocked	Juice has pulp or seeds	Clean the tap and ensure that both filters of the container are placed correctly
Machine stops after a short period of time	Not enough ventilation	Ensure the ventilation grids of the machine are not blocked
	Too much power	Contact the Technical support service

### • ONLY Zumex Speed Cooler Podium

FAULT	POSSIBLE CAUSE	SOLUTION
The cooling group does not cool the system	Cooling group is disconnected	Press the push-button placed on the left of the deposit's control lever
	Cooling group is not on	Check the internal connection on the opening of the back cover of the base stand
	Temperature regulation device is not positioned correctly	Turn clockwise to increase cooling
	Internal fault	Contact the Technical support service
The machine does not start	Level detector photocells are dirty	Clean photocells
	Deposit walls are dirty	Clean the deposit
	Internal fault	Contact the Technical support service

### IMPORTANT SAFETY ADVICE

Always disconnect the machine before carrying out any action to unblock the unit.

To avoid accidents, do not start the machine without the safety detectors of the protective cover.

The cover acts on the safety detectors. The correct operation of the safety detectors must be tested periodically. Start the machine and then remove the cover and check the machine to ensure that it stops. If the machine does not stop, contact the Technical support service.

Do not start or use the machine if the power supply cable is damaged, contact the Technical support service.

When moving the machine and base stand (Zumex Speed Self-Service Podium and Zumex Speed Cooler Podium):  
 Unlock the front wheels of the base stand.  
 Never push the machine, only push the base stand. Never pull the base stand towards you.



## CE DECLARATION OF CONFORMITY

We, **ZUMEX Máquinas y Elementos, S.A.**

at Polígono Industrial de Moncada II, C/ La Closa, 16 - 46113 Moncada - Valencia (Spain)

declare under our exclusive responsibility that the following

**Citrus Juicers' models**

**ZUMEX MINEX  
ZUMEX VERSATILE  
ZUMEX VERSATILE D PODIUM  
ZUMEX SPEED TANK PODIUM  
ZUMEX SPEED SELF-SERVICE  
PODIUM**

**ZUMEX ESSENTIAL  
ZUMEX VERSATILE D  
ZUMEX SPEED  
ZUMEX SPEED D TANK PODIUM  
ZUMEX SPEED SELF-SERVICE**

**ZUMEX ESSENTIAL AUTOSTART  
ZUMEX VERSATILE PODIUM  
ZUMEX SPEED D  
ZUMEX SPEED SELF-SERVICE**

are in conformity with the following harmonized standards

**EN ISO 12100-1** *Safety of machinery. Basic concepts, general principles for design. Part 1: Basic terminology, methodology.*  
**EN ISO 12100-2** *Safety of machinery. Basic concepts, general principles for design. Part 2: Technical principles.*  
**EN 60335-1** *Safety of household and similar electrical appliances. Part 1: General requirements.*  
**EN 60335-2-14** *Safety of household and similar electrical appliances. Part 2: Particular requirements for kitchen machines.*  
**EN 55014-1** *Electromagnetic compatibility. Requirements for household appliances, electrical tools and similar apparatus. Part 1: Emission. Product family standard.*  
**EN 55014-2** *Electromagnetic compatibility. Requirements for household appliances, electrical tools and similar apparatus. Part 2: Immunity. Product family standard.*  
**EN 61000-3-2** *Electromagnetic compatibility. Part 3: Limits - Section 2: Limits for harmonic current emissions (equipment input current ≤ 16A per phase).*  
**EN 61000-3-3** *Electromagnetic compatibility. Part 3: Limits - Section 3: Limitation of voltage fluctuations and flicker in low-voltage supply systems for equipment with rated current ≤ 16A.*  
**EN 1672-2** *Food processing machinery. Basic concepts. Part 2: Hygiene requirements.*

complying with the provisions of the following European Directives:

**98/37/EC** *approximation of the laws of the Member States relating to machinery.*  
**2006/95/EC** *harmonization of the laws of Member States relating to electrical equipment designed for use within certain voltage limits.*  
**2004/108/EC** *approximation of the laws of the Member States relating to electromagnetic compatibility.*  
**93/43/EC** *Directive on the hygiene of foodstuffs*  
**2002/72/EC** *Directive relating to plastic materials and articles intended to come into contact with foodstuffs*

Moncada, 01 October 2007

J. Mengual

ZUMEX MÁQUINAS Y ELEMENTOS S.A.  
 Pta. Ind. Moncada II, c/ La Closa, 16  
 46113 Moncada, Valencia, España  
 Tel: +34 961 301 251 - Fax: +34 961 301 255  
 www.zumex.com - zumex@zumex.com



## CE DECLARATION OF CONFORMITY

We, **ZUMEX Máquinas y Elementos, S.A.**

at Polígono Industrial de Moncada II, C/ La Closa, 16 - 46113 Moncada - Valencia (Spain)

declare under our exclusive responsibility that the following

**Citrus Juicers' models**

**ZUMEX SPED COOLER PODIUM**

are in conformity with the following harmonized standards

**EN ISO 12100-1** *Safety of machinery. Basic concepts, general principles for design. Part 1: Basic terminology, methodology.*  
**EN ISO 12100-2** *Safety of machinery. Basic concepts, general principles for design. Part 2: Technical principles.*  
**EN 60335-1** *Safety of household and similar electrical appliances. Part 1: General requirements.*  
**EN 60335-2-14** *Safety of household and similar electrical appliances. Part 2: Particular requirements for kitchen machines.*  
**EN 60335-2-24** *Safety of household and similar electrical appliances. Part 2: Particular requirements for refrigerators, food-freezers and ice-makers.*  
**EN 55014-1** *Electromagnetic compatibility. Requirements for household appliances, electrical tools and similar apparatus. Part 1: Emission. Product family standard.*  
**EN 55014-2** *Electromagnetic compatibility. Requirements for household appliances, electrical tools and similar apparatus. Part 2: Immunity. Product family standard.*  
**EN 61000-3-2** *Electromagnetic compatibility. Part 3: Limits - Section 2: Limits for harmonic current emissions (equipment input current ≤ 16A per phase).*  
**EN 61000-3-3** *Electromagnetic compatibility. Part 3: Limits - Section 3: Limitation of voltage fluctuations and flicker in low-voltage supply systems for equipment with rated current ≤ 16A.*  
**EN 1672-2** *Food processing machinery. Basic concepts. Part 2: Hygiene requirements.*

complying with the provisions of the following European Directives:

**98/37/EC** *approximation of the laws of the Member States relating to machinery.*  
**2006/95/EC** *harmonization of the laws of Member States relating to electrical equipment designed for use within certain voltage limits.*  
**2004/108/EC** *approximation of the laws of the Member States relating to electromagnetic compatibility.*  
**93/43/EC** *Directive on the hygiene of foodstuffs*  
**2002/72/EC** *Directive relating to plastic materials and articles intended to come into contact with foodstuffs*

Moncada, 01 October 2007

J. Mengual

ZUMEX MÁQUINAS Y ELEMENTOS S.A.  
 Pta. Ind. Moncada II, c/ La Closa, 16  
 46113 Moncada, Valencia, España  
 Tlf: +34 961 301 251 - Fax: +34 961 301 255  
 www.zumex.com - zumex@zumex.com